

News from 
CLAREMONT COURT
CARE HOME

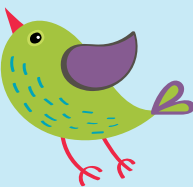
Dear friends,

With a fresh new season upon us, our home is bursting with brightness and vibrancy! Take a glimpse into our delightful spring escapades in our latest newsletter.



Sensing something special

We were delighted with our first sensory light session, which was a big hit with our residents. For those residents living with dementia, the calming lights have had a great impact, including soothing anxiety and improving memory recall. We are always looking to improve our care for residents living with dementia and these sessions are something that everyone can enjoy and take part in together.



Easter fun



Easter is always special for us at Claremont Court, and this year was no different with lots of fun and activities taking place over the Easter weekend. Residents enjoyed chocolate treats, an egg hunt, a visit from the Easter Bunny, plus they got creative painting and decorating eggs. A big thank you to our team who went above and beyond to make it an egg-cellent Easter for everyone.



The heart of our community



We were delighted to launch the Mindful Mug Café, where people living with dementia in the Guildford community can unwind, reminisce, and chat with residents and their family members. The team has put a lot of hard work into the café, and we are so pleased to see the positive impact it is already having on our residents. Having a loved one who is living with dementia can be hard on family members, so to see a friendly, caring face at the Mindful Mug can be all it takes to give them their smile back and know they are not alone. Putting our home at the heart of our community is something we are very proud of.



Paw-some visitor

Our residents enjoyed some fresh air and exercise by taking Tilly the dog for a walk. Not only does a dog walk help to keep our residents active, but it's also a great way for them to get out and about in the community and socialise with others. After a long walk, Tilly returned to the home to enjoy lots of cuddles, treats and fuss. We can't wait to welcome her back and didn't want her to leave.



With love,
Karen Byres
Home Manager

Claremont Court Care Home, Harts Gardens, Guildford GU2 9QA, Tel: 01483 924 547

**We always love reading your comments on Facebook!
Here are a few recent ones:**

“So much fun had by all.” Sheila

“You go above and beyond in all you do, thank you.” Basil

“Love all the things you do to make it fun living for these loved ones” Tina



If you don't wish to receive future newsletter updates from us, please email us at marketing@carebase.org.uk and we'll of course, remove you from our list.